

Best Practices

Ice Blankets

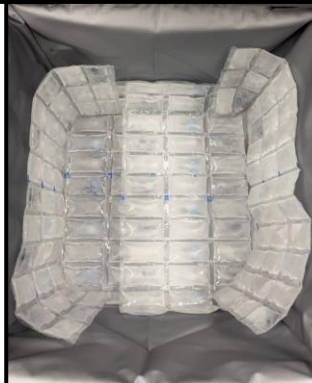
To maintain proper cold temperature limits under the recommended 41° F for all cold food items, frozen ice blankets are used.

- Six (6) frozen ice blankets used per insulated bag.
- Ice Blankets should be frozen daily
- Ice blankets can be ordered using the CMS stock # 4205.



Place two frozen ice blankets at the bottom of the insulated bag, covering the entire bottom of the bag.

Place frozen ice packs on the left and right side of the bag. This will create a cold barrier inside the insulated bag maintaining the correct temperature.



Once the insulated bag is packed, place two frozen ice blankets directly on top of the food items. Place open insulated bag in the refrigeration unit until time to transport.

Closing the insulated bags prior to removal from the refrigeration unit will result in poor circulation of chilled air inside the closed bag. Do not close the insulated bag until it has been removed from the refrigeration unit for service.